



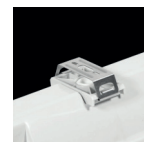
The MIVP-X LED is designed for explosive hazardous environments and has increased resistance against deformation and impact. Certified for hazardous area classification zone 2 & 22

- A range of lumen outputs from 1690- 8300lm
- Colour Temperatures: 3000K - 4000K - 5000K - 6500K
- Available with Dimming (/STD/DALI)
- Available with Emergency (/ME3/ME3-ST/ME3-PRO)
- Hazardous Area Classification: Zone 2 & 22
- Mounting: Screw fix mounted as standard. Stainless steel fixing clips are available or Wire suspension (/SSB/WS)
- Diffuser: Translucent polycarbonate (/OP)
- IP Rating: IP66
- IK Rating: IK10
- Body: Grey Polycarbonate
- Available with 1Phase and 3 Phase through wiring
- Dimensions: (Length x Depth, including clamp)
 - /6 - 748 x 208mm
 - /12 - 1357 x 208mm
 - /15 - 1659 x 208mm

Product	MIVP-X Vapour Proof Luminaire						
Light Source	LED						
System Power Opal diffuser in 4000K	/11W 1690lm	/16W 2350lm	/23W 3330lm	/31W 4660lm	/44W 6710m	/38W 5810lm	/53W 8300lm
Lenghth	/6 662mm		/12 1272mm			/15 1572mm	
Driver	/STD Non Dimming				/DALI DALI Dimming		
Colour Temperature	/830 3000k		/840 4000k		/850 5000k		/865 6500k
Colour	/GR Grey						
Diffuser	/OP Opal						
Emergency	/ME3 Three hour maintained emergency		/ME3-ST Three hour maintained self test emergency			/ME3-PRO Three hour DALI addressable emergency	
To Specify: MIVP-X, with length 662mm, 11W, 4000k, CRI80, Wire Suspended with an Opal diffuser and Grey finish, completed with standard control gear. Part code: MIVP-X /11W/1690lm//6/STD/840/GR/OP/WS							

Fitting attachments

/SSB



Screws and stainless brackets

/WS



Suspension with the use of stainless hooks

MIR/RANGE/SW/LM/SIZE/DIM/840/OPT/ME3
Style
Range abbreviation
Wattage
Lumens
Size
Driver
Colour Temperature
Options
Emergency