

Description

The MIS290 LED range is an LED, slim profile linear luminaire. Manufactured from steel, with Tp(a) polycarbonate diffusers. The MIS290 is a first choice for schools, colleges, hospitals, healthcare and residential buildings and are particularly suited for defined escape routes where a low profile surface luminaire is required. 5 year system warranty.

Design Features

- Steel body finished powder coated white
- Polycarbonate end caps support the prismatic diffuser
- Excellent all round distribution including superb vertical luminance
- (LOCK) lockable end caps available to prevent unauthorised diffuser removal.
- Dimensions - 1275mm x 200mm x 90mm.
- Dimensions - 1575mm x 200mm x 90mm.

LED Boards

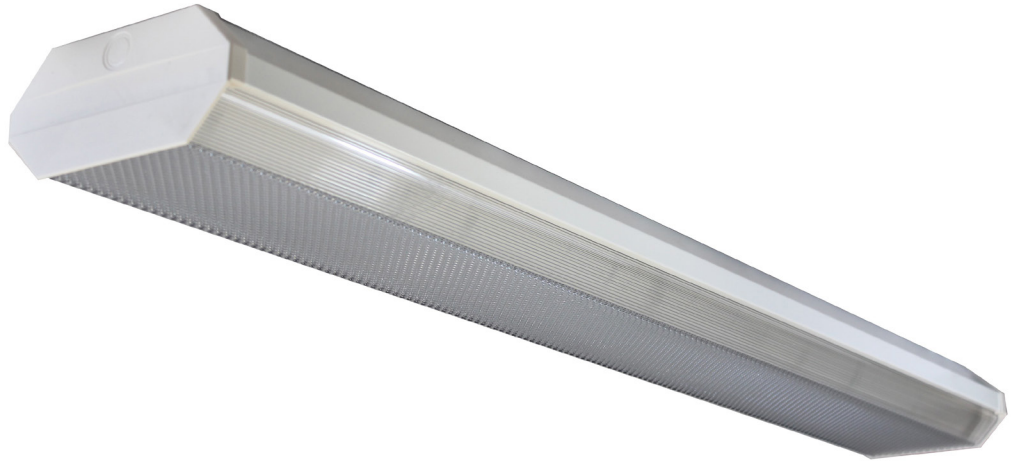
- Supplied with (STD) standard LED Driver with (1-10v) 1-10v, (SDIM) Switch Dim or (DALI) DALI dimming gear available.

Emergency conversion

(ME3) Emergency luminaires are supplied with integral packs as standard.
(ME3-ST) self test emergency
(ME3-PRO) DALI Emergency.

How to specify:

MIS290/LED/12/225mA/840/DALI for an MIS290 surface mounted LED luminaire 1275mm in length with a lamp lumen output of 2830 lumens, 4000K colour temperature and a DALI dimming driver,



MIS290/LED/12/5440lm



Great Vertical illuminance, ideal for Hospitals and Schools

Ordering Information

Reference Number	Luminaire Lumens	Efficacy (l.l.m/cw)	LED Driver		Colour Temperature		Emergency Options		
			STD	DALI	3000k (830)	4000k (840)	ME3	ME3-ST	ME3-PRO
MIS290/LED/12/225mA	2830	141.5	•	•	•	•	•	•	•
MIS290/LED/12/325mA	4020	135.8	•	•	•	•	•	•	•
MIS290/LED/15/225mA	3618	144	•	•	•	•	•	•	•
MIS290/LED/15/325mA	5276	142	•	•	•	•	•	•	•

When ordering quote reference number followed by essential & specific options. For warranty details please see our website.