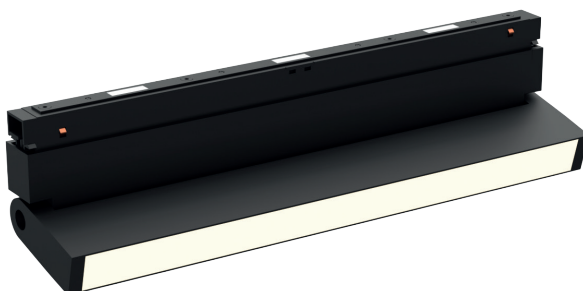


MAG-48V TRK-WW-300



The MAG-48V TRK-WW-300 is a magnetic track-type quick-swap lighting system. It includes flood linear lights, anti-glare accent and high-power spotlights, hanging lights, wall washers, and decorative lamps.

- A lumen outputs of 840lm or 1100lm
- Colour Temperatures: 2700K - 6000K & Tuneable white
- Beam Angles: (/110D)
- Colours: Black or White (/BK/WH)
- Available with Dimming (/STD/0-10V/DALI)
- Wireless dimming available (/WI)
- Refer to track system **page 84** for the following mounting, Surface, Recessed and Wire suspended
- CRI90 as standard
- Dimensions: (Length x Width x Height)
294 x 22 x 104mm

Product	MAG-48V TRK-WW-300 LED Linear Wall Washer Lamp Suited For 48V Mag-Track					
Light Source	LED					
System Power Luminaire lumens (4000k)	/7W 840lm			/10W 1100lm		
Size	294 x 22 x 104mm (Length x Width x Height)					
Driver	/STD Non Dimming		/0-10V 0-10V Dimming		/DALI DALI Dimming	/WI Wireless Controls
Colour Temperature	/927 2700k	/930 3000k	/940 4000k	/950 5000k	/960 6000k	/TWH Tuneable White
Colour	/WH White			/BK Black		
Beam Angle	/110D 110 Degrees					
Emergency	Remote EMLED MAG TRK available					
To Specify MAG-48V TRK-WW-300, 10W, 4000k, 1100lm, 110 degree beam angle, CRI 90, LED linear track spotlight and supplied with DALI control gear and finished in black. Part code: MI/MAG-48V/TRK-WW/300/10W/1100lm/DALI/940/110D/BK						

Side Profile Dimensions

